

QuickShip

Shipping in 48 hours



January 2018



H.E. WILLIAMS, INC.

The Williams QuickShip program offers a competitive suite of top-selling products to support immediate lighting requirements on any job.

Shipping within 48 hours, our centrally located manufacturing facility ensures quick delivery.

Order Requirements

- Orders must consist of QuickShip items ONLY.
- "QuickShip" MUST be referenced in the subject line on all requests.
- Standard freight terms apply.

Troffers



LT | LED Troffer

- Available with fieldseleCCT – the simplest way to personalize lighting
- Shallow housing depth
- Efficacies up to 140 lm/W
- Frosted lens provides smooth, uniform illumination

Fixture Standards: Frosted acrylic lens • 80 CRI • 10% dimming for 0-10V applications • Universal voltage

fieldseleCCT™	DESCRIPTION
LT-22-L37/8FS-AF-QS-DIM-UNV	2' x 2' • 3,700 lumens • fieldseleCCT
LT-24-L57/8FS-AF-QS-DIM-UNV	2' x 4' • 5,700 lumens • fieldseleCCT

STANDARD SERIES	DESCRIPTION
LT-14-L47/835-AF-QS-DIM-BD-UNV	1' x 4' • 4,700 lumens • 3500K CCT
LT-14-L47/840-AF-QS-DIM-BD-UNV	1' x 4' • 4,700 lumens • 4000K CCT
LT-22-L39/835-AF-QS-DIM-BD-UNV	2' x 2' • 3,900 lumens • 3500K CCT
LT-22-L39/840-AF-QS-DIM-BD-UNV	2' x 2' • 3,900 lumens • 4000K CCT
LT-24-L40/835-AF-QS-DIM-BD-UNV	2' x 4' • 4,000 lumens • 3500K CCT
LT-24-L40/840-AF-QS-DIM-BD-UNV	2' x 4' • 4,000 lumens • 4000K CCT
LT-24-L64/835-AF-QS-DIM-BD-UNV	2' x 4' • 6,400 lumens • 3500K CCT
LT-24-L64/840-AF-QS-DIM-BD-UNV	2' x 4' • 6,400 lumens • 4000K CCT

Troffers (Continued)



PT | Shallow Plenum LED Troffer

- Available with fieldseleCCT – the simplest way to personalize lighting
- Slim 2-3/8" depth for shallow plenum applications
- Room-side access
- Efficiency of 100+ lm/W
- Uniform ambient illumination

Fixture Standards: Diffuse ribbed acrylic lens • 80 CRI • 10% dimming for 0-10V applications • Universal voltage

fieldseleCCT™	DESCRIPTION
PT-22-L36/8FS-RA-QS-DIM-UNV	2' x 2' • 3,600 lumens • fieldseleCCT
PT-24-L55/8FS-RA-QS-DIM-UNV	2' x 4' • 5,500 lumens • fieldseleCCT

STANDARD SERIES	DESCRIPTION
PT-22-L43/835-RA-QS-DIM-BD-UNV	2' x 2' • 4,300 lumens • 3500K CCT
PT-22-L43/840-RA-QS-DIM-BD-UNV	2' x 2' • 4,300 lumens • 4000K CCT
PT-24-L61/835-RA-QS-DIM-BD-UNV	2' x 4' • 6,100 lumens • 3500K CCT
PT-24-L61/840-RA-QS-DIM-BD-UNV	2' x 4' • 6,100 lumens • 4000K CCT



LPT | Low-Profile Troffer

- Shallow 3-7/16" fixture height
- Fully gasketed door frame with offset mitered corners prevents light leaks
- Deep reinforcement ribs provide added strength and durability

Fixture Standards: #12 pattern acrylic lens, .100" thick • T8 electronic ballast • Universal voltage

SERIES	DESCRIPTION
LPT-22-232U-SA12100-QS-EB2*AD-BD-UNV	2' x 2' • 2 U-Lamps
LPT-24-332-SA12100-QS-EB3*AD-BD-UNV	2' x 4' • 3-Lamp
LPT-24-432-SA12100-QS-EB4*AD-BD-UNV	2' x 4' • 4-Lamp
LPT-24-432-SA12100-(4)FO32/841/ECO F&I-QS-EB4*AD-BD-UNV	2' x 4' • 4-Lamps installed

High Bay



GL | Low-Profile High Bay

- Fixture depth of less than 4" allows fixture placement near the ceiling for maximum space utilization
- Aluminum housing for heat dissipation
- Quick-wire access plate for easy attachment of incoming power supply

LED Fixture Standards: 4' • VBY hangers • 10% dimming for 0-10V applications • Universal voltage

SERIES	DESCRIPTION
GL-4-L300/840-(2)VBY/PWU-QS-DIM-BD-UNV	30,000 lumens • 4000K CCT
GL-4-L300/850-(2)VBY/PWU-QS-DIM-BD-UNV	30,000 lumens • 5000K CCT

FLUORESCENT Fixture Standards: 4' • 54-watt T5HO • VBY hangers • Electronic ballast • Universal voltage

SERIES	DESCRIPTION
GL-4-454T5H-(2)VBY/PWU-QS-EB4-BD-UNV	4-Lamp
GL-4-454T5H-(4)F54/41 F&I-(2)VBY/PWU-QS-EB4*AD-BD-UNV	4-Lamps Installed
GL-4-654T5H-(2)VBY/PWU-QS-EB4/2-BD-UNV	6-Lamp
GL-4-654T5H-(6)F54/41 F&I-(2)VBY/PWU-QS-EB4/2*AD-BD-UNV	6-Lamps Installed



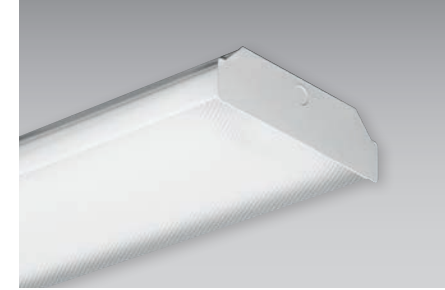
HL | High Bay Industrial

- More than 95% optical efficiency
- Consumes less energy than metal halide or HPS and delivers comparable light levels when replaced one-for-one
- Quick-wire access plate for easy attachment of incoming power supply

Fixture Standards: 4' • 54-watt T5HO • Medium Distribution • VBY hangers • Electronic ballast • Universal voltage

SERIES	DESCRIPTION
HL-4-454T5H-MD-(2)VBY/PWU-QS-EB4*AD-BD-UNV	4-Lamp
HL-4-654T5H-MD-(2)VBY/PWU-QS-EB4/2*AD-BD-UNV	6-Lamp

Wraps



17 | Low-Profile Wrap

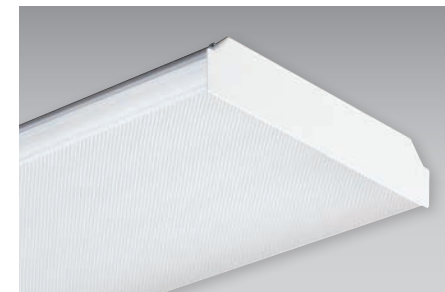
- Wrap around lens provides uniform downward light distribution and subtle side illumination
- Shallow depth provides low-profile appearance
- Shielding is secured continuously along fixture sides

LED Fixture Standards: 4' • Frosted prismatic acrylic diffuser • 10% dimming for 0-10V applications • Universal voltage

SERIES	DESCRIPTION
17-4-L55/835-AF-QS-DIM-BD-UNV	5,500 lumens • 3500K CCT

FLUORESCENT Fixture Standards: 4' • Clear prismatic acrylic diffuser • 32-watt T8 • Electronic ballast • Universal voltage

SERIES	DESCRIPTION
17-4-232-A-QS-EB2*AD-BD-UNV	2-Lamp



18 | Low-Profile Wrap

- Wrap around lens provides uniform downward light distribution and subtle side illumination
- Shallow depth provides low-profile appearance
- Shielding is secured continuously along fixture sides

Fixture Standards: 4' • Clear prismatic acrylic diffuser • 32-watt T8 • Electronic ballast • Universal voltage

SERIES	DESCRIPTION
18-4-432-A-QS-EB4*AD-BD-UNV	4-Lamp

Strips

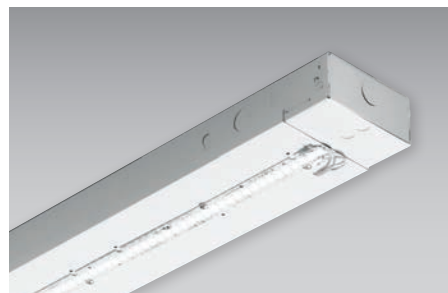


75S | Square Lens LED Strip

- Available with fieldseleCCT – the simplest way to personalize lighting
- Square lens provides a clean look for architectural environments
- Available in 4' and 8' lengths
- Up to 12,000 lumens, 128 lm/W

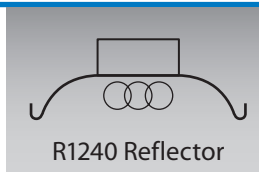
Fixture Standards: 10% dimming for 0-10V applications • Universal voltage

fieldseleCCT™	DESCRIPTION
75S-4-L45/8FS-QS-DIM-UNV	4' • 4,500 lumens • fieldseleCCT
75S-4-L60/8FS-QS-DIM-UNV	4' • 6,000 lumens • fieldseleCCT
75S-8-L90/8FS-QS-DIM-UNV	8' • 9,000 lumens • fieldseleCCT
75S-8-L120/8FS-QS-DIM-UNV	8' • 12,000 lumens • fieldseleCCT



76 | Standard Strip

- Low 2" profile housing
- Available in 4' and 8' lengths
- Up to 10,600 nominal lumens (LED only)
- R1240 Reflector available (T8 only),
Catalog #: R1240-4 REFLECTOR



LED Fixture Standards: 10% dimming for 0-10V applications • Universal voltage

SERIES	DESCRIPTION
76-4-L53/835-QS-DIM-BD-UNV	4' • 5,300 lumens • 3500K CCT
76-4-L53/840-QS-DIM-BD-UNV	4' • 5,300 lumens • 4000K CCT
76-8-L106/835-QS-DIM-BD-UNV	8' • 10,600 lumens • 3500K CCT
76-8-L106/840-QS-DIM-BD-UNV	8' • 10,600 lumens • 4000K CCT

FLUORESCENT Fixture Standards: 32-watt T8 • Electronic ballast • Universal voltage

SERIES	DESCRIPTION
76-4-232-QS-EB2*AD-BD-UNV	4' • 2-Lamp
76-8-432-QS-EB4*AD-BD-UNV	8' • 4-Lamp
R1240-4 REFLECTOR	4' Reflector

Downlights



L60 | 6" Round LED Downlight

- Module and driver accessible from below ceiling plane
- Self-flanged aluminum reflector for maximum optical performance and crisp, clean appearance
- Integral pan throat field-adjusts to accommodate ceilings up to 1-5/8" thick.

Fixture Standards: 80 CRI • 3500K CCT • Clear semi-specular reflector • Wide distribution • 10% dimming for 0-10V applications

SERIES	DESCRIPTION
L60-L11C/835-CS/W-QS-DIM-120	1,100 lumens • 120V
L60-L11C/835-CS/W-QS-DIM-277	1,100 lumens • 277V
L60-L20C/835-CS/W-QS-DIM-120	2,000 lumens • 120V
L60-L20C/835-CS/W-QS-DIM-277	2,000 lumens • 277V

Emergency



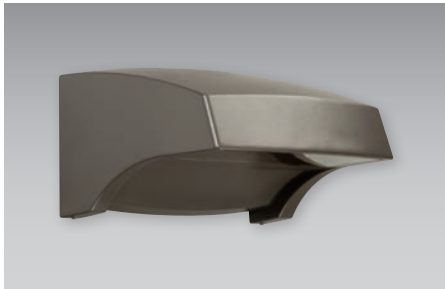
EXIT | LED Exit Sign

- Available as full-time AC powered unit or emergency unit with battery backup.
- Provided as universal single face/double face unit.
- Ni-Cad battery on emergency (EM) units provides 90 minutes of emergency operation.

Fixture Standards: AC operation with emergency battery backup • Industry-standard white housing • 120 & 277 dual voltage

SERIES	DESCRIPTION
EXIT-R-EM-WHT-QS-D	Red Letters

Wall Packs

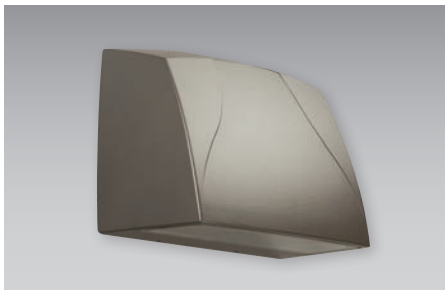


VWMH | Horizontal Architectural Mini Wall Pack

- Provides security and accent lighting
- Designed to blend with a variety of architectural styles
- Uplight or downlight applications
- Up to 1,700 lumens

Fixture Standards: 80 CRI • 4000K CCT • Lambertian distribution • Dark bronze housing • Clear glass lens • 10% dimming for 0-10V applications • Universal voltage

SERIES	DESCRIPTION
VWMH-L10/840-TL-DBZ-CGL-QS-DIM-UNV	1,000 lumens
VWMH-L17/840-TL-DBZ-CGL-QS-DIM-UNV	1,700 lumens



VWMV | Vertical Architectural Mini Wall Pack

- Provides security and accent lighting
- Designed to blend with a variety of architectural styles
- Uplight or downlight applications
- Up to 1,700 lumens

Fixture Standards: 80 CRI • 4000K CCT • Lambertian distribution • Dark bronze housing • Clear glass lens • 10% dimming for 0-10V applications • Universal voltage

SERIES	DESCRIPTION
VWMV-L10/840-TL-DBZ-CGL-QS-DIM-UNV	1,000 lumens
VWMV-L17/840-TL-DBZ-CGL-QS-DIM-UNV	1,700 lumens

